

Savoy chair

Материали

Дърво: бук или дъб

Лак и оцветител: на водна основа

Опаковка

Количество: 2 бр.

Обем: 0.163 / 0.248 / 0.283 м³

Размери (см): 78/46/49h или 69h или 79h

Тегло: 14 кг

Платове

Ширина на ролката: 1,4 м

Седалка: 0,50 м за 4 бр.

Опции

Дървена седалка

Подложка за седалка

Размери

Седалка (височина): 46 см / 65 см / 75 см

Дълбочина: 37 см

Ширина: 42 см





Дамаска

Разбираме значението на дамаската, която покрива Вашите мебели. Интелигентният избор е от значение. Нашите колекции ще ви улеснят в намирането на идеалното решение за Вашите нужди. Има много възможности. Възползвайте се от тях. Толкова е просто.

Textum Lotos

Weight: 379 gr/m²
Surface: 100% PU
Composition: 80% Polyester – 20% Cotton
Thickness: 0,8 mm
Martindale Test: 100.000 Cycles
Fire retardant: EN 1021-1

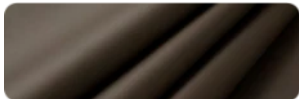
5269



5271



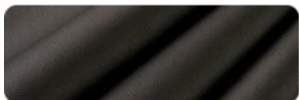
5272



5582



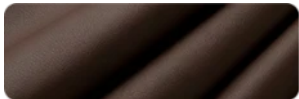
7006



9244



9314



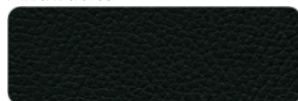
9430



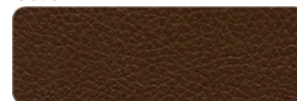
Griffine Gingko

Weight: 830 gr/m²
Surface: 100% PU
Composition: 85% PVC – 15% Cotton
Thickness: 1,2 mm
Martindale Test: 150.000 Cycles
Fire retardant: MI (NFP 92503) / BS5852 CRIB 5

Anthracite



Café



Imperial



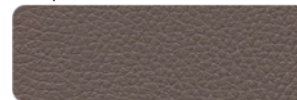
Nult



Souris



Taupe



Citrouille



Tomate



Curio

Weight: 280 gr/m²

Surface: Knitted fabric

Composition: 100% Polyester

Martindale Test: 45 000 - 60 000 CYCLES

Fire retardant: EN 1021-1

Curio 35



Curio 48



Curio 57



Curio 78



Luis

Weight: 380 gr/m²

Surface: Velvet

Composition: 100% Polyester

Martindale Test: 90 000 - 100 000 CYCLES

Fire retardant: EN 1021-1

Luis 34



Luis 52



Luis 75



Luis 90



Monolith

Weight: 330 gr/m²

Surface: Velvet

Composition: 100% Polyester

Martindale Test: >100 000 CYCLES

Fire retardant: EN 1021-1

Monolith 37



Monolith 48



Monolith 59



Monolith 77



Preston

Weight: 330 gr/m²

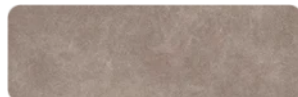
Surface: Velvet

Composition: 100% Polyester

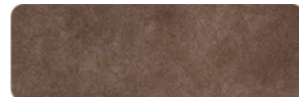
Martindale Test: 65 000 - 70 000 CYCLES

Fire retardant: EN 1021-1

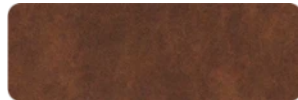
Preston 21



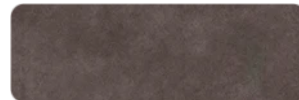
Preston 22



Preston 24



Preston 94



Letto

Weight: 380 gr/m²
Surface: 100% Velvet
Composition: 100% Polyester
Martindale Test: 90 000 - 100 000 CYCLES
Fire retardant: EN 1021-1

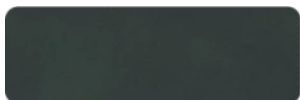
Letto 77



Letto 99



Letto 39



Letto 69



Matt

Weight: 430 gr/m²
Surface: 100% Velvet
Composition: 100% Polyester
Martindale Test: 90 000 - 100 000 CYCLES
Fire retardant: EN 1021-1

Matt 38



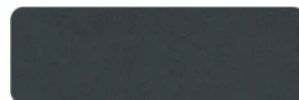
Matt 48



Matt 59



Matt 93



Dolaro

Weight: 600 gr/m²
Surface: 100% VINYL
Composition: 100% PES
Thickness: 0.9 mm
Martindale Test: 120 000 Cycles

BA-1 White



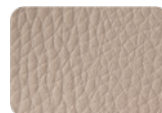
BE-1 Beige



BE-9 Taupe



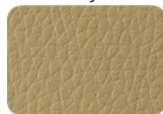
BE-10 Skin Pink



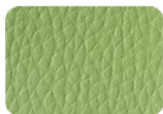
ZO-1 Mustard



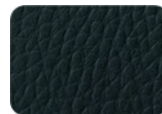
ZO-3 Dijon



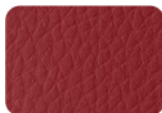
Z-21 Lime Green



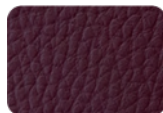
Z-5 Moss Green



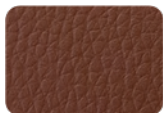
CE-2 Red



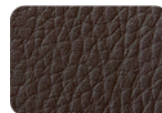
BO-10 Wine



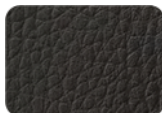
BR-1 Mocha Brown



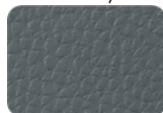
BR-2 Brown



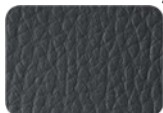
BR-5 Brown



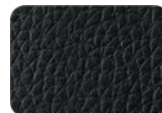
SA-4 Gray



GR-2 Dark Gray



CZ Black



Лакове / Покрития

Използваме лакове за база и топ лакове с широк спектър от възможни приложения: върху дървесина с отворени или затворени пори, за гланцови или матови покрития, пигментирани или прозрачни. Нашите покрития пренасят предимствата на най-модерните покривни технологии върху най-традиционните продукти за покритие на дърво. Защото искаме нашите продукти да се отличават с ярък блясък.



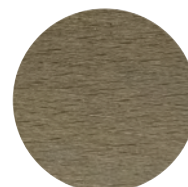
1001
natural



1004
honey oak



1310
sonoma oak



1018s02
oak



PNH1
light walnut



362
walnut



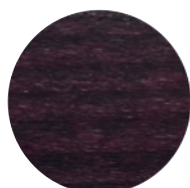
1076
dark walnut



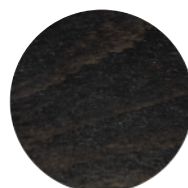
P44
vintage



1062
light mahagony



1060
mahagony



00903
wenge



eu182
black