

Ben chair

Matériaux

Bois: hêtre

Laque et teinture: à base d'eau

Carton

Quantité: 2 pcs

Volume: 0.341 m³

Dimensions (cm): 65/50/105

Poids: 15 kg

Tissus

Largeur du rouleau: 1,4 m

Siège: 1.6 m for 3 pcs

Taille

Dossier (h): 84 cm

Siège: 47 cm

Profondeur: 44 cm

Largeur: 44 cm





Tissu

Nous comprenons l'importance du tissu qui recouvre vos meubles. Un choix judicieux est important. Nos collections vous permettront de trouver plus facilement la solution parfaite pour vos besoins. Les possibilités sont nombreuses. Saisissez-les. C'est aussi simple que cela.

Textum Lotos

Poids: 379 gr/m²
Surface: 100% PU
Composition: 80% Polyester – 20% Cotton
Épaisseur: 0,8 mm
Test de Martindale: 100.000 Cycles
Retardateur de feu: EN 1021-1

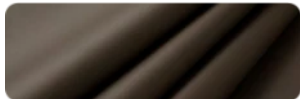
5269



5271



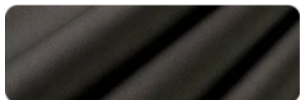
5272



5582



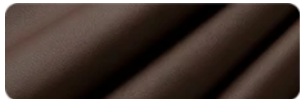
7006



9244



9314



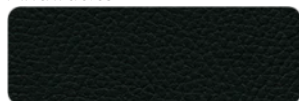
9430



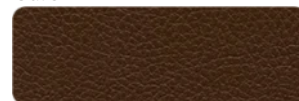
Griffine Gingko

Poids: 830 gr/m²
Surface: 100% PU
Composition: 85% PVC – 15% Cotton
Épaisseur: 1,2 mm
Test de Martindale: 150.000 Cycles
Retardateur de feu: MI (NFP 92503) / BS5852 CRIB 5

Anthracite



Café



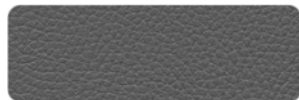
Imperial



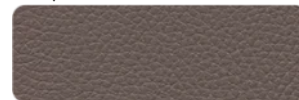
Nult



Souris



Taupe



Citrouille



Tomate



Curio

Poids: 280 gr/m²

Surface: Knitted fabric

Composition: 100% Polyester

Test de Martindale: 45 000 - 60 000 CYCLES

Retardateur de feu: EN 1021-1

Curio 35



Curio 48



Curio 57



Curio 78



Luis

Poids: 380 gr/m²

Surface: Velvet

Composition: 100% Polyester

Test de Martindale: 90 000 - 100 000 CYCLES

Retardateur de feu: EN 1021-1

Luis 34



Luis 52



Luis 75



Luis 90



Monolith

Poids: 330 gr/m²

Surface: Velvet

Composition: 100% Polyester

Test de Martindale: >100 000 CYCLES

Retardateur de feu: EN 1021-1

Monolith 37



Monolith 48



Monolith 59



Monolith 77



Preston

Poids: 330 gr/m²

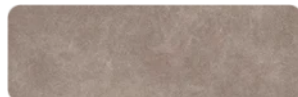
Surface: Velvet

Composition: 100% Polyester

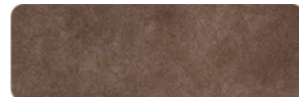
Test de Martindale: 65 000 - 70 000 CYCLES

Retardateur de feu: EN 1021-1

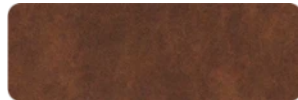
Preston 21



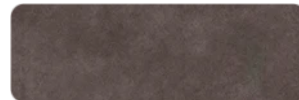
Preston 22



Preston 24



Preston 94



Letto

Poids: 380 gr/m²
 Surface: 100% Velvet
 Composition: 100% Polyester
 Test de Martindale: 90 000 - 100 000 CYCLES
 Retardateur de feu: EN 1021-1

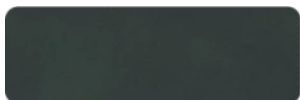
Letto 77



Letto 99



Letto 39



Letto 69



Matt

Poids: 430 gr/m²
 Surface: 100% Velvet
 Composition: 100% Polyester
 Test de Martindale: 90 000 - 100 000 CYCLES
 Retardateur de feu: EN 1021-1

Matt 38



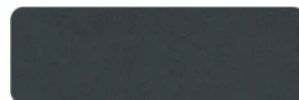
Matt 48



Matt 59



Matt 93



Dolaro

Poids: 600 gr/m²
 Surface: 100% VINYL
 Composition: 100% PES
 Épaisseur: 0.9 mm
 Test de Martindale: 120 000 Cycles

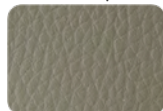
BA-1 White



BE-1 Beige



BE-9 Taupe



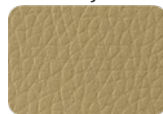
BE-10 Skin Pink



ZO-1 Mustard



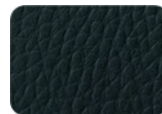
ZO-3 Dijon



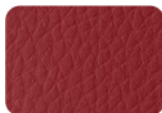
Z-21 Lime Green



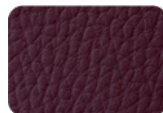
Z-5 Moss Green



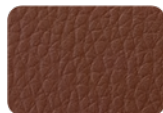
CE-2 Red



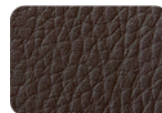
BO-10 Wine



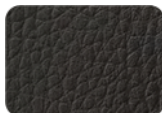
BR-1 Mocha Brown



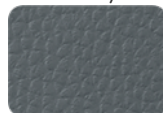
BR-2 Brown



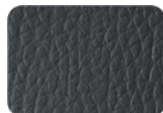
BR-5 Brown



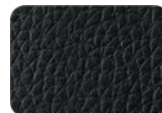
SA-4 Gray



GR-2 Dark Gray



CZ Black



Revêtements

Nous utilisons des vernis de base et de finition avec un large éventail d'applications possibles : sur du bois à pores ouverts ou fermés, en tant que vernis de finition brillant ou mat, pigmenté ou transparent. Nos revêtements transfèrent les avantages des technologies de revêtement les plus modernes dans les produits de revêtement du bois les plus traditionnels. Parce que nous essayons de minimiser notre influence négative sur l'environnement, nous n'utilisons que des produits à base d'eau certifiés EN 71-3.



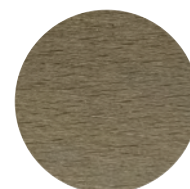
1001
natural



1004
honey oak



1310
sonoma oak



1018s02
oak



PNH1
light walnut



362
walnut



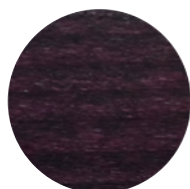
1076
dark walnut



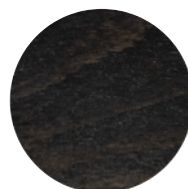
P44
vintage



1062
light mahogany



1060
mahogany



00903
wenge



eu182
black