

## Уилям стол

### Материали

Дърво: бук или дъб

Лак и оцветител: на водна основа

### Опаковка

Количество: 2 бр.

Обем: 0.309 м3

Размери (см): 65/48/99

Тегло: 14 кг

### Платове

Ширина на ролката: 1,4 m

Седалка: 0,52 m for 2 бр.

### Опции

Дървена седалка

Подложка за седалка

Половин седалка

Дълбока седалка

### Размери

Облегалката на гърба (височина): 86 см

Седалка (височина): 45 см

Дълбочина: 43 см

Ширина: 41 см





## Дамаска

Разбираме значението на дамаската, която покрива Вашите мебели. Интелигентният избор е от значение. Нашите колекции ще ви улеснят в намирането на идеалното решение за Вашите нужди. Има много възможности. Възползвайте се от тях. Толкова е просто.

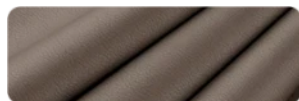
## Textum Lotos

Weight: 379 gr/m<sup>2</sup>  
Surface: 100% PU  
Composition: 80% Polyester – 20% Cotton  
Thickness: 0,8 mm  
Martindale Test: 100.000 Cycles  
Fire retardant: EN 1021-1

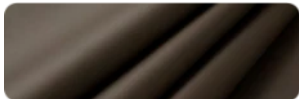
5269



5271



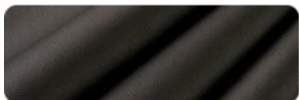
5272



5582



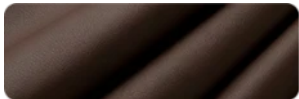
7006



9244



9314



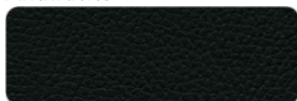
9430



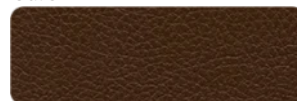
## Griffine Gingko

Weight: 830 gr/m<sup>2</sup>  
Surface: 100% PU  
Composition: 85% PVC – 15% Cotton  
Thickness: 1,2 mm  
Martindale Test: 150.000 Cycles  
Fire retardant: MI (NFP 92503) / BS5852 CRIB 5

Anthracite



Café



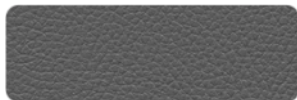
Imperial



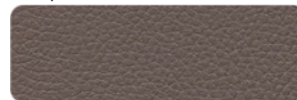
Nult



Souris



Taupe



Citrouille



Tomate



## Curio

Weight: 280 gr/m<sup>2</sup>

Surface: Knitted fabric

Composition: 100% Polyester

Martindale Test: 45 000 - 60 000 CYCLES

Fire retardant: EN 1021-1

Curio 35



Curio 48



Curio 57



Curio 78



## Luis

Weight: 380 gr/m<sup>2</sup>

Surface: Velvet

Composition: 100% Polyester

Martindale Test: 90 000 - 100 000 CYCLES

Fire retardant: EN 1021-1

Luis 34



Luis 52



Luis 75



Luis 90



## Monolith

Weight: 330 gr/m<sup>2</sup>

Surface: Velvet

Composition: 100% Polyester

Martindale Test: >100 000 CYCLES

Fire retardant: EN 1021-1

Monolith 37



Monolith 48



Monolith 59



Monolith 77



## Preston

Weight: 330 gr/m<sup>2</sup>

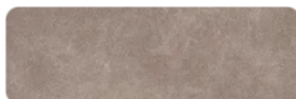
Surface: Velvet

Composition: 100% Polyester

Martindale Test: 65 000 - 70 000 CYCLES

Fire retardant: EN 1021-1

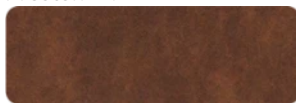
Preston 21



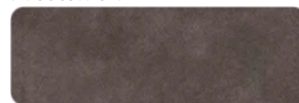
Preston 22



Preston 24



Preston 94



## Letto

Weight: 380 gr/m<sup>2</sup>  
Surface: 100% Velvet  
Composition: 100% Polyester  
Martindale Test: 90 000 - 100 000 CYCLES  
Fire retardant: EN 1021-1

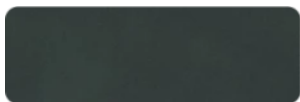
Letto 77



Letto 99



Letto 39



Letto 69



## Matt

Weight: 430 gr/m<sup>2</sup>  
Surface: 100% Velvet  
Composition: 100% Polyester  
Martindale Test: 90 000 - 100 000 CYCLES  
Fire retardant: EN 1021-1

Matt 38



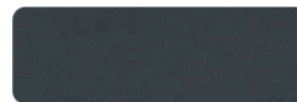
Matt 48



Matt 59



Matt 93



## Dolaro

Weight: 600 gr/m<sup>2</sup>  
Surface: 100% VINYL  
Composition: 100% PES  
Thickness: 0.9 mm  
Martindale Test: 120 000 Cycles

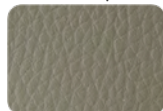
BA-1 White



BE-1 Beige



BE-9 Taupe



BE-10 Skin Pink



ZO-1 Mustard



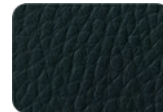
ZO-3 Dijon



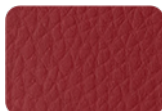
Z-21 Lime Green



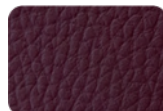
Z-5 Moss Green



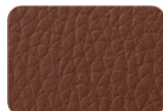
CE-2 Red



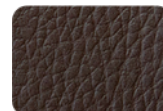
BO-10 Wine



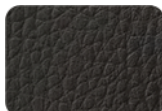
BR-1 Mocha Brown



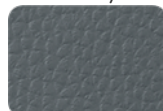
BR-2 Brown



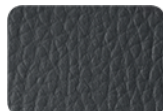
BR-5 Brown



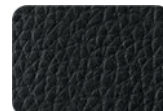
SA-4 Gray



GR-2 Dark Gray



CZ Black



## Лакове / Покрития

Използваме лакове за база и топ лакове с широк спектър от възможни приложения: върху дървесина с отворени или затворени пори, за гланцови или матови покрития, пигментирани или прозрачни. Нашите покрития пренасят предимствата на най-модерните покривни технологии върху най-традиционните продукти за покритие на дърво. Защото искаме нашите продукти да се отличават с ярък блясък.



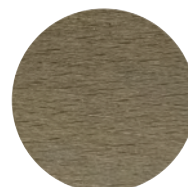
1001  
natural



1004  
honey oak



1310  
sonoma oak



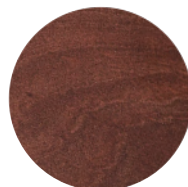
1018s02  
oak



PNH1  
light walnut



362  
walnut



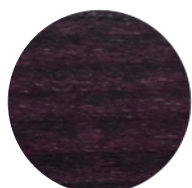
1076  
dark walnut



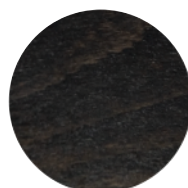
P44  
vintage



1062  
light mahagony



1060  
mahagony



00903  
wenge



eu182  
black