

Chris chair

Materials

Wood: beech or oak

Lacquer and stain: water based

Carton

Quantity: 2 pcs

Volume: 0.309 m³

Dimensions (cm): 65/48/99

Weight: 14 kg

Fabrics

Roll width: 1,4 m

Seat & Back rest: 0,9 m

Size

Back rest (h): 79 cm

Seat (h): 47 cm

Depth: 43 cm

Width: 39 cm





Fabrics

We understand the importance of a fabric covering your furniture. A smart choice matters. Our collections will make it easier for you to find the perfect solution for your needs. There are many possibilities. Reach for them. It is as simple as that.

Textum Lotos

Weight: 379 gr/m²
Surface: 100% PU
Composition: 80% Polyester – 20% Cotton
Thickness: 0,8 mm
Martindale Test: 100.000 Cycles
Fire retardant: EN 1021-1

5269



5271



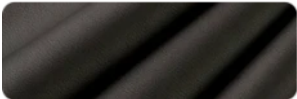
5272



5582



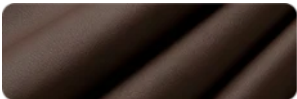
7006



9244



9314



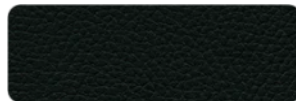
9430



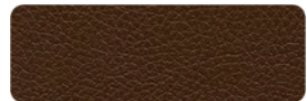
Griffine Gingko

Weight: 830 gr/m²
Surface: 100% PU
Composition: 85% PVC – 15% Cotton
Thickness: 1,2 mm
Martindale Test: 150.000 Cycles
Fire retardant: MI (NFP 92503) / BS5852 CRIB 5

Anthracite



Café



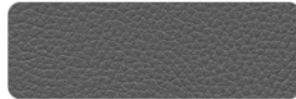
Imperial



Nult



Souris



Taupe



Citrouille



Tomate



Curio

Weight: 280 gr/m²
Surface: Knitted fabric
Composition: 100% Polyester
Martindale Test: 45 000 - 60 000 CYCLES
Fire retardant: EN 1021-1

Curio 35



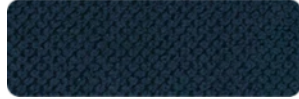
Curio 48



Curio 57



Curio 78



Luis

Weight: 380 gr/m²
Surface: Velvet
Composition: 100% Polyester
Martindale Test: 90 000 - 100 000 CYCLES
Fire retardant: EN 1021-1

Luis 34



Luis 52



Luis 75



Luis 90



Monolith

Weight: 330 gr/m²
Surface: Velvet
Composition: 100% Polyester
Martindale Test: >100 000 CYCLES
Fire retardant: EN 1021-1

Monolith 37



Monolith 48



Monolith 59



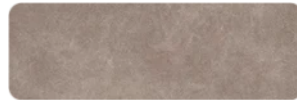
Monolith 77



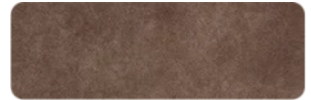
Preston

Weight: 330 gr/m²
Surface: Velvet
Composition: 100% Polyester
Martindale Test: 65 000 - 70 000 CYCLES
Fire retardant: EN 1021-1

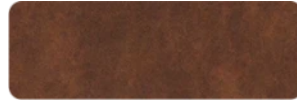
Preston 21



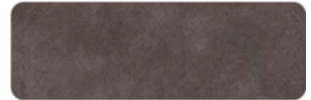
Preston 22



Preston 24



Preston 94



Letto

Weight: 380 gr/m²
 Surface: 100% Velvet
 Composition: 100% Polyester
 Martindale Test: 90 000 - 100 000 CYCLES
 Fire retardant: EN 1021-1

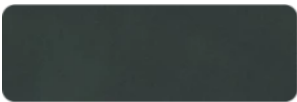
Letto 77



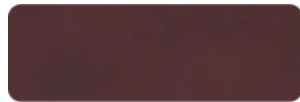
Letto 99



Letto 39



Letto 69



Matt

Weight: 430 gr/m²
 Surface: 100% Velvet
 Composition: 100% Polyester
 Martindale Test: 90 000 - 100 000 CYCLES
 Fire retardant: EN 1021-1

Matt 38



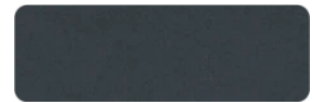
Matt 48



Matt 59



Matt 93



Dolaro

Weight: 600 gr/m²
 Surface: 100% VINYL
 Composition: 100% PES
 Thickness: 0.9 mm
 Martindale Test: 120 000 Cycles

BA-1 White



BE-1 Beige



BE-9 Taupe



BE-10 Skin Pink



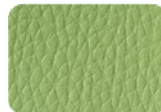
ZO-1 Mustard



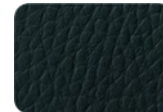
ZO-3 Dijon



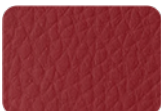
Z-21 Lime Green



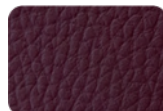
Z-5 Moss Green



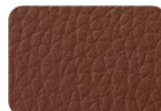
CE-2 Red



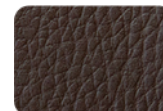
BO-10 Wine



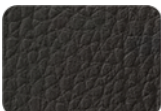
BR-1 Mocha Brown



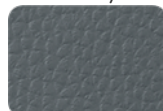
BR-2 Brown



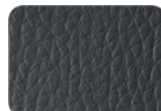
BR-5 Brown



SA-4 Gray



GR-2 Dark Gray



CZ Black



Coatings

We use base and top coatings with a wide range of possible applications: on open or closed pore wood, as glossy and matt topcoats, pigmented or clear. Our coatings transfer the benefits of the most modern coating technologies into the most traditional wood coating products. Because we try to minimize our negative influence to the environment we use only water based products certified with EN 71-3.



1001
natural



1004
honey oak



1310
sonoma oak



1018s02
oak



PNH1
light walnut



362
walnut



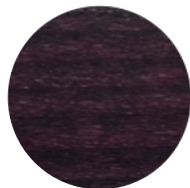
1076
dark walnut



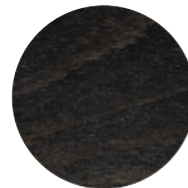
P44
vintage



1062
light mahogany



1060
mahogany



00903
wenge



eu182
black