

## Benjamin chair

### Materials

Wood: beech

Lacquer and stain: water based

### Carton

Quantity: 2 pcs

Volume: 0.309 m<sup>3</sup>

Dimensions (cm): 65/48/99

Weight: 14 kg

### Fabrics

Roll width: 1,4 m

Seat and back: 1,2 m for 2 pcs

### Options

Seat pad

Half seat

Deep seat

### Size

Back rest (h): 89 cm

Seat (h): 44 cm

Depth: 43 cm

Width: 41 cm





## Fabrics

We understand the importance of a fabric covering your furniture. A smart choice matters. Our collections will make it easier for you to find the perfect solution for your needs. There are many possibilities. Reach for them. It is as simple as that.

### Textum Lotos

Weight: 379 gr/m<sup>2</sup>  
 Surface: 100% PU  
 Composition: 80% Polyester – 20% Cotton  
 Thickness: 0,8 mm  
 Martindale Test: 100.000 Cycles  
 Fire retardant: EN 1021-1



### Griffine Gingko

Weight: 830 gr/m<sup>2</sup>  
 Surface: 100% PU  
 Composition: 85% PVC – 15% Cotton  
 Thickness: 1,2 mm  
 Martindale Test: 150.000 Cycles  
 Fire retardant: MI (NFP 92503) / BS5852 CRIB 5



## Curio

Weight: 280 gr/m<sup>2</sup>  
Surface: Knitted fabric  
Composition: 100% Polyester  
Martindale Test: 45 000 - 60 000 CYCLES  
Fire retardant: EN 1021-1

Curio 35



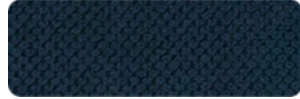
Curio 48



Curio 57



Curio 78



## Luis

Weight: 380 gr/m<sup>2</sup>  
Surface: Velvet  
Composition: 100% Polyester  
Martindale Test: 90 000 - 100 000 CYCLES  
Fire retardant: EN 1021-1

Luis 34



Luis 52



Luis 75



Luis 90



## Monolith

Weight: 330 gr/m<sup>2</sup>  
Surface: Velvet  
Composition: 100% Polyester  
Martindale Test: >100 000 CYCLES  
Fire retardant: EN 1021-1

Monolith 37



Monolith 48



Monolith 59



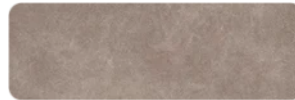
Monolith 77



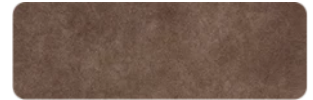
## Preston

Weight: 330 gr/m<sup>2</sup>  
Surface: Velvet  
Composition: 100% Polyester  
Martindale Test: 65 000 - 70 000 CYCLES  
Fire retardant: EN 1021-1

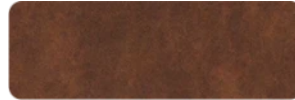
Preston 21



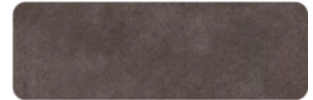
Preston 22



Preston 24



Preston 94



## Letto

Weight: 380 gr/m<sup>2</sup>  
 Surface: 100% Velvet  
 Composition: 100% Polyester  
 Martindale Test: 90 000 - 100 000 CYCLES  
 Fire retardant: EN 1021-1

Letto 77



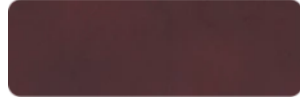
Letto 99



Letto 39



Letto 69



## Matt

Weight: 430 gr/m<sup>2</sup>  
 Surface: 100% Velvet  
 Composition: 100% Polyester  
 Martindale Test: 90 000 - 100 000 CYCLES  
 Fire retardant: EN 1021-1

Matt 38



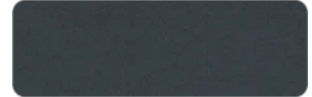
Matt 48



Matt 59



Matt 93



## Dolaro

Weight: 600 gr/m<sup>2</sup>  
 Surface: 100% VINYL  
 Composition: 100% PES  
 Thickness: 0.9 mm  
 Martindale Test: 120 000 Cycles

BA-1 White



BE-1 Beige



BE-9 Taupe



BE-10 Skin Pink



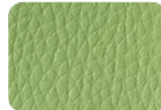
ZO-1 Mustard



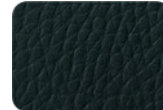
ZO-3 Dijon



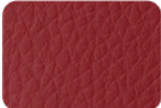
Z-21 Lime Green



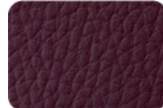
Z-5 Moss Green



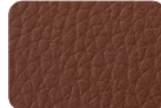
CE-2 Red



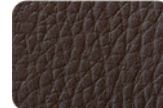
BO-10 Wine



BR-1 Mocha Brown



BR-2 Brown



BR-5 Brown



SA-4 Gray



GR-2 Dark Gray



CZ Black



## Coatings

We use base and top coatings with a wide range of possible applications: on open or closed pore wood, as glossy and matt topcoats, pigmented or clear. Our coatings transfer the benefits of the most modern coating technologies into the most traditional wood coating products. Because we try to minimize our negative influence to the environment we use only water based products certified with EN 71-3.



1001  
natural



1004  
honey oak



1310  
sonoma oak



1018s02  
oak



PNH1  
light walnut



362  
walnut



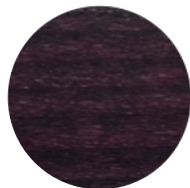
1076  
dark walnut



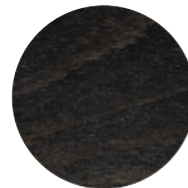
P44  
vintage



1062  
light mahogany



1060  
mahogany



00903  
wenge



eu182  
black